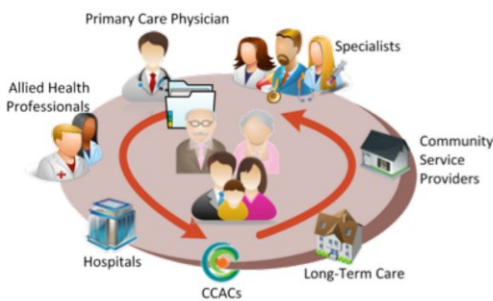


## Identified Clients Have At Least One Of The Following

- 4 or more chronic conditions.
- 3 hospital admissions in the last 2 years
- Length of stay in hospital of more than 20 days in the last 2 years.
- Newly diagnosed palliative/end of life care patients.

*Health links are about your health care team working together to coordinate your care.*



## Meet Your Health Link Coordinated Care Team

### Care Coordinator

Cassie Johnson  
MSW RSW  
343-363-2604

### Practical Assistance Worker

Jennifer Hamilton  
613-888-6183

*Please ask your Family Doctor to send a referral.*

## Salmon River Health Link

310 Bridge Street West  
Wing "C"

Napanee, ON K7R 0A4

Fax: 613-354-8940

[www.kchc.ca](http://www.kchc.ca)

# HealthLink

Salmon River

## What are "Health Links"?

The Ministry of Health and Long –Term Care has funded Health Links to improve care for those persons living with chronic health conditions.

The Health Link for our area is

**Salmon River Health Link**

which Includes:

- Town of Greater Napanee
- Deseronto,
- Tyendinaga Township
- Tyendinaga Mohawk Territory



## ***FOCUS***

- Person-centred—each client has their own plan for care.
- ***Care Coordinator*** and ***Practical Assistance Worker*** to assist clients with complex conditions to identify their needs through:
  - ***Connecting*** clients with the care they need.
  - Helping clients ***navigate*** the system.
  - Develop ***Coordinated Care Plans***.
- Talk with you and the rest of your health care team about how to best achieve ***YOUR*** goals.
  - Team approach to care.

## ***Primary Goal***

- Improve delivery and coordination of care to better meet the needs of people with multiple complex conditions.

## ***Benefits***

- Improved communications between family doctor/NP's/ Hospital/Homecare/Community Agencies.
- Easier transitions between hospital and other services.
- Improved quality of life
- Increased efficiencies in the health care system.
- Improved client and family Satisfaction.
- Linking with community resources available to clients and their family.

## ***What is a Coordinated Care Plan?***

- A written plan created by your Health Link Coordination Team that indicates your medical condition, medications, issues in your daily life, and concerns that are important to ***YOU!***
- This plan will be shared with your family doctor, nurses and other health care providers to ensure that all providers that are involved in your care have accurate information to avoid duplicate treatments, tests and medications.
- It is created by ***YOU*** and the Health Link Coordination Team. It helps communicate your wishes about your health care.